

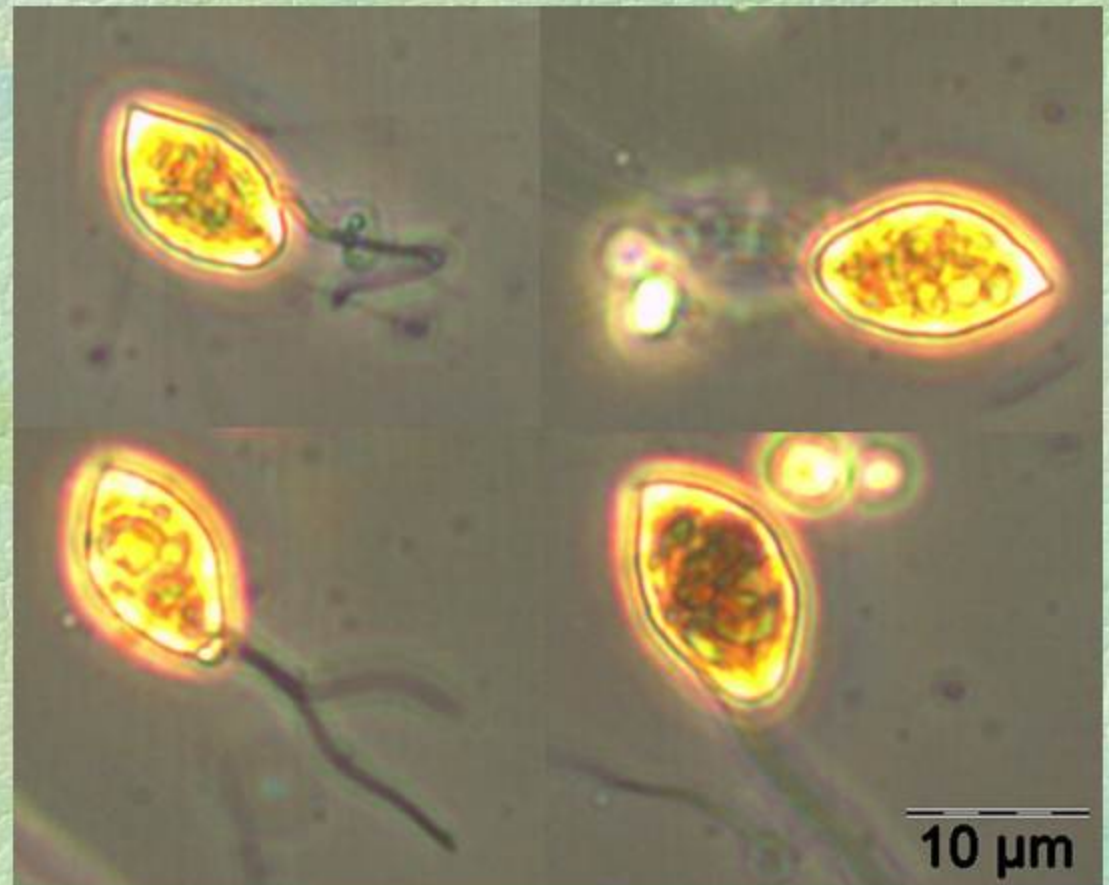
phytoplankton –incertae sedis

## *Katablepharis remigera*

abundance: spring, summer  
life-form: solitary  
length: 12 - 20  $\mu\text{m}$   
width: 7 - 10  $\mu\text{m}$



LM (Bornholm Sea)



LM (Gotland Sea)



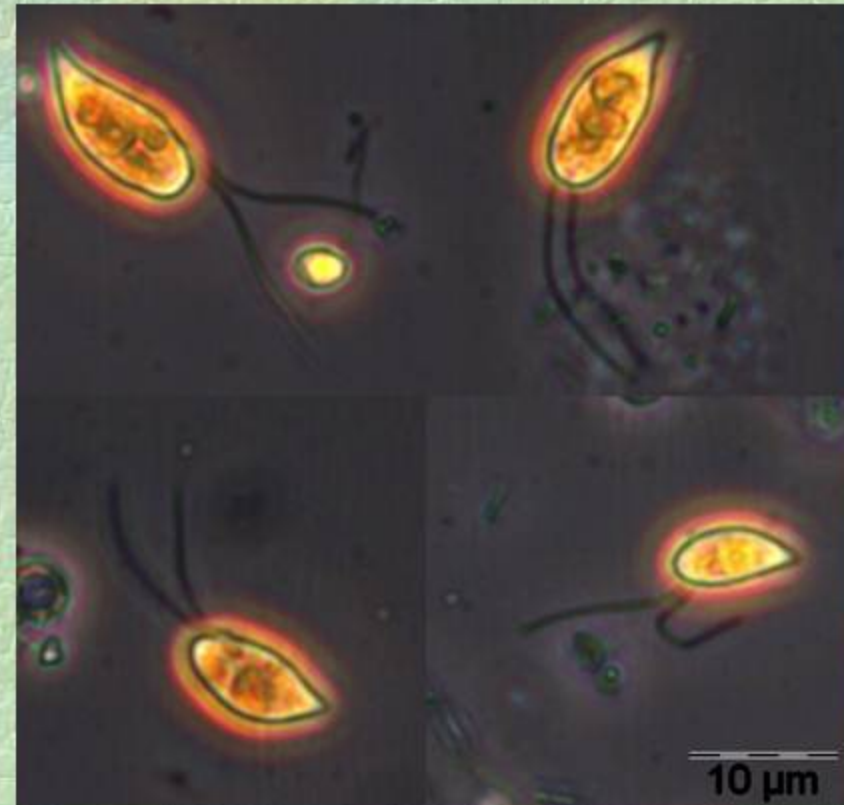
phytoplankton –incertae sedis

## Leucocryptos marina

abundance: all year  
life-form: solitary  
length: 15 –18  $\mu\text{m}$



LM (coastal station Heiligendamm )



LM (Kiel Bight )



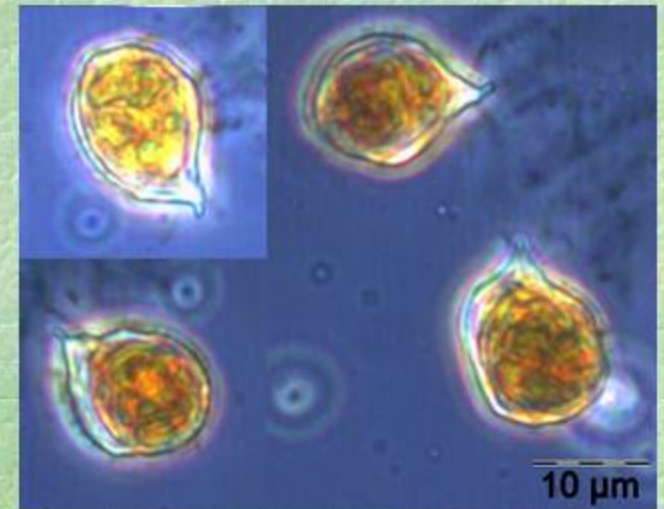
phytoplankton –incertae sedis

## Telonema sp.

life-form: solitary



LM (coastal station Heiligendamm )



LM (Mecklenburg Bight )